



Oasis Academy Harpur Mount

Prospectus 2016/17



A message from our CEO

A very warm welcome to Oasis Community Learning!

I am delighted that you and your daughter or son are interested in becoming part of Oasis Academy Harpur Mount.

Oasis Community Learning was established as a Multi Academy Trust in 2004 with the vision to create:

“Exceptional Education at the Heart of the Community”.

We now run Academies in four main regions throughout the UK, providing either primary, secondary or all-through education. All our Academies are committed to providing a rich educational experience and ensuring that every child and young person has the opportunity to achieve at the highest level.

Our ethos is integral to that provision: it is an expression of our character, a statement of who we are and therefore the lens through which we assess all we do. We are committed to a model of inclusion, equality, healthy relationships, hope, and perseverance throughout all the aspects of the life and culture of each Academy community.

We passionately embrace learning and are committed to every child within our care reaching their full potential and developing holistically across every area of their lives, both now and in the future.

All of this is underpinned by our philosophy of education which highlights our focus on inspirational leadership, deep learning and healthy communities and aspires to develop the character and competence of every child within every community that we are part of.

At Oasis Community Learning therefore, we believe we are all ‘the architects of our students’ lives’ and as such we are committed to laying the right foundations for every one of our young people.

So we look forward to your daughter or son potentially becoming part of Oasis, in the knowledge that we will work in partnership with you to ensure they become confident learners ready to fulfil their aspirations in life.

Best wishes,
John Murphy

“Exceptional Education at the Heart of the Community”.



John Murphy

Chief Executive Officer,
Oasis Community Learning

Principal’s welcome

Thank you for taking the time to have a look at our Prospectus.

This is designed to give you an overview of Oasis Academy Harpur Mount so that you have some key facts about the school to get started on.

Once you’ve looked through it, please take a look at our website www.oasisacademyharpurmount.org which gives additional practical information about the Academy.

Additionally, we warmly welcome and encourage you to come and visit us for a tour of the Academy. You can arrange this through our office 0161 205 4993, and we will be delighted to see you and to answer any questions you may have.

The relationship that we have with you – the parents and carers of our students – is extremely important to us because it’s only by us working together, as a team, that your children can achieve their social and educational potential, and become good citizens, leading happy and rewarding lives when they leave us. We understand that, as parents and carers, nothing is more important to you than ensuring that your children have the best chance in life so that you can be proud of them. That’s why keeping your children safe and continually stimulated to learn, is our top priority. We all want to be proud of your children.

Your school is part of **your** community and Oasis Academy Harpur Mount is, and very much wants to be, part of your community. An outstanding school is one where everybody associated with it works together as an effective team with the aim of helping your children achieve their academic and social potential so that they can have better tomorrows and turn their ambitions and dreams into realities.

You will see me in the playground in the mornings before school starts and at the end of the Academy day – please come over for a quick word or want to say hello. We are all here not just for our students but for you as well. When it comes to doing the best for your children, I know that you will be there for us and this means a very great deal to all our staff.

We all very much look forward to getting to know you and to working with you. A very warm welcome to Oasis Academy Harpur Mount.

Best wishes

Lesley Crew
Associate Principal



Lesley Crew

Associate Principal



At Oasis Academy Harpur Mount we aim to:

- Provide a safe, stimulating, and enriching environment for our students to be able to thrive emotionally, socially and educationally.
- Develop independent learners who increasingly have a stake in directing their own learning and developing their own interests.
- Ensure that our students enjoy coming to school, are happy and actively contribute towards making the Academy alive with purposeful learning.

About our Academy

Oasis Academy Harpur Mount is situated in Harpurhey. Until 1st January 2013 Oasis Academy Harpur Mount was called Harpur Mount Primary School. The original school was built in 1904 and was opened by Emmeline Pankhurst.

Oasis Academy Harpur Mount is a co-educational school, which admits students between the ages of 3 to 11 years.

Parents' evenings are held termly to discuss your child's progress and full reports are issued at the end of each academic year. Additionally, interim progress reports are

issued at the end of the Autumn and Spring terms for all students from Nursery to Year 6. Ethos and celebration assemblies will be held on a Monday and Friday. We hold a whole Academy assembly to celebrate the week's achievements. We also hold an annual presentation assembly in July to celebrate achievements and excellence during the year.

In addition to parents' evenings, if you have concerns we encourage you to make an appointment at any time during the year to discuss anything connected with your child's education or wellbeing.



Our Values

At Oasis Academy Harpur Mount, everything we do is centred around the Oasis ethos:

- a **passion** to include everyone
- a **desire** to treat everyone equally, respecting differences
- a **commitment** to healthy and open relationships
- a deep sense of **hope** that things can change and be transformed
- a sense of **perseverance** to keep going for the long haul

We have an unwavering belief in 'inclusion' – that **every** child should have the opportunity to realise and reach their potential, regardless of their background. You will often see the Oasis 'Circle of Inclusion' throughout the Academy to symbolise this belief.

We believe in community. We recognise that we are stronger together and therefore value collaboration. We develop an understanding and tolerance of each other through knowledge, mutual respect, believing the best of each other and forgiveness. We work as a community, supporting our own pupils, families and staff in everything we do.

We also have our Children's Aims, as developed by our Student Council:

- To **respect** ourselves, each other and the wider community
- To try our **best** in everything we do
- To show **good manners**, we are kind to everyone in and outside of school
- To **appreciate** diversity and understand that everybody is different and has different needs
- To **respect** all faiths, cultures and abilities
- To involve and use our local **community**

Admissions statement

Students admitted to the Academy are allocated places in accordance with the local authority's Admissions Policy. For further information on this please click on the following website:

<http://www.manchester.gov.uk/admissions>

Oasis Academy Harpur Mount Aims



Safeguarding at Oasis Academy Harpur Mount

The general safety and well-being of our children is paramount to us and influences all that we aim to achieve at Oasis Academy Harpur Mount. In order to ensure that we comply with Keeping Children Safe in Education 2016, a number of procedures and practices are in place.

1

Create a happy, stimulating, caring learning environment where risk taking and challenge is encouraged

2

Awaken and nurture a love of learning that will last a lifetime and provide everyone with the skills to pursue that learning independently and collaboratively

3

Enable everyone to reach the highest standard of which they are capable, academically and in other fields such as sport, arts and culture

4

Encourage all learners to develop their own interests, passions, enthusiasms, creativity and individuality

5

Help learners to understand and care about the world in which they live, and to believe in their ability and responsibility to change that world to make it better

6

Empower learners to develop a strong sense of right and wrong, good and bad, equality and justice. Give them the inner strength to act according to these values

7

Provide learners with the skills and understanding to live a healthy, successful life, physically, emotionally and spiritually

8

Foster respect, tolerance and love for others, regardless of race, gender, religion or difference, within a framework of equality of opportunity and fairness

9

Help learners to appreciate human achievements and aspirations and to believe in their own potential to attain great things

10

Promote a feeling of pride and confidence in learners' identities; as individuals, as members of our Academy, as part of the local community and as citizens of the world

These include:

- A 'single central record' with details of all employees.
- Records of any racist incidents.
- Records of any bullying and harassment incidents.
- Record of any welfare concerns.
- Risk assessments.

Our employment procedures within a Single Central Record include details of enhanced DBS checks, proof of identity checks, a record of qualifications, evidence of permission to work and the date checks were made and by whom.

We are also conscious of our responsibility to closely monitor and support recognised vulnerable groups of children (e.g. pupils who are 'looked after' or are on the child protection register). To help us discharge the duty, we work closely with key external agencies to ensure safeguarding practices are complied with.

We provide a secure site for our children and adults are asked to adhere to our rules. School gates are kept locked except at the start and end of the day. Visitors may enter only through the main entrance after signing in at the office.

Related documentation that support our safeguarding practice include our:

- Health and Safety policy
- Behaviour, Discipline and Anti-bullying policy
- Child protection policy
- Attendance policy
- First Aid policy
- Confidential Reporting policy

All staff are trained in relation to child protection and a school child protection officer has been identified. Being safe and feeling safe are the two main outcomes for our children. We spend time talking to them to discuss any concerns and how effectively our policy operates in practice.

The Academy day

Breakfast Club

Opens from 8:00am for all children Monday to Friday. Nursery children **must be** accompanied by an adult.

Entry to breakfast club is allowed until 8:15am as staff are needed to supervise the children.

Nursery

8:50am to 11:30am

12:50pm to 3:10pm

Nursery children have continuous access to outdoor play and provision.

Reception

8:50am to 11:40am

12:50pm to 3:10pm

Reception children have continuous access to outdoor play and provision.

Years 1 & 2

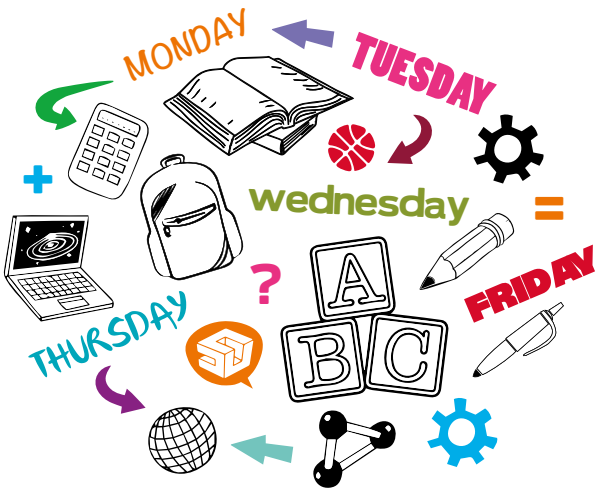
8:50am to 12:00pm (break from 10:30am to 10:45am)

1:10pm to 3:15pm (no afternoon break)

Years 3, 4, 5 & 6

8:50am to 12:10pm (break from 10:45am to 11:00am)

1:10pm to 3:20pm (no afternoon break)



NB: The safety and welfare of all our children are paramount to us at school; it can be very upsetting for a child not to be picked up on time. This also can cause serious problems in school for staff they all have a number of commitments after school and are not always on site after 3.30pm, therefore;

All children need to be collected promptly at the end of each day - or at the end of after school activities (this will be on the letter sent home about the after school club).

If you are unable to collect your child, please make sure a telephone message is left with school or someone who is able to inform your class teacher.



Registration and late arrival

It's essential that your child arrives promptly at the Academy because the day starts off with the teacher explaining the day's learning to the class. Registration in the morning takes place at 9.00am for everybody so all children need to be at the Academy for 8.50am when the doors open.

Afternoon registration

Afternoon registration takes place between 12.50pm and 1.15pm, depending on the year-group. Please refer to the previous page for the time applicable for your child. Any child arriving more than 10 minutes after these times will be recorded as arriving late. If, for any reason, your child is late, please escort them to the Academy reception office and inform the office staff of their arrival and the reason for their lateness. It is better to come late than not to come at all. Any child arriving after 9:30 am will be recorded as an unauthorised absence for that morning unless an acceptable reason is given.

Illness during the Academy day

If a child becomes ill during the Academy day, whenever possible they will be sent home. Please ensure that we have your up-to-date contact details for such circumstances. The decision to send a child home will be taken by a member of the Academy Leadership Team, and will be based on advice given by trained First Aiders.

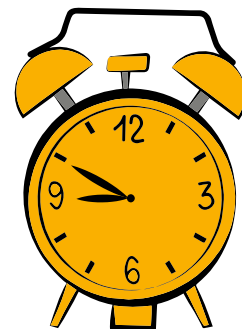
Children leaving the Academy other than at official times must be signed out at the main office. Should a child be injured at the Academy and need hospital attention, they will be taken to hospital by car or an ambulance will be called, whichever is considered appropriate. The Academy will contact the child's parents/carers immediately. Should it be necessary the Principal, Deputy Principal or any other member of the teaching staff will act in loco parentis. Serious accidents will be recorded in the Official Accident Book.

Parents/carers will be informed of any less serious injuries or incidents during the Academy day when they collect their child or by phone.

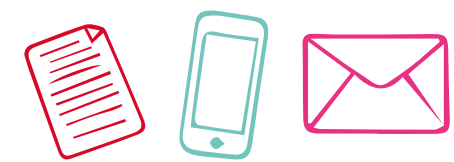
Child absence in term time

Oasis Academy Harpur Mount strive for all of our pupils to have 100% attendance. The law is clear that parents/carers do not have the right to take their child out of the Academy during term time.

In exceptional circumstances an Academy Attendance Officer may authorise a short period of absence. However, the criteria for allowing such absences are clearly defined and independent written evidence must be produced by the parent/carer regardless of the exceptional circumstances.



Contact with parents/carers



Children achieve more when both home and the Academy work together. To this end, the Academy aims to work in close partnership with parents/carers. You are welcome to raise any questions or concerns that arise with staff.

Teaching staff can be consulted at the end of the day when they escort children to the playground or by appointment. The Principal, or a member of the Academy Leadership Team, is normally available at the start and end of the academy day, to clarify information or respond to any issues. This is a very busy time for class teachers so unfortunately they will be unable to respond to concerns at this time.

If you have any concerns at any time during the academic year please contact your child's teacher by letter or through the office to arrange an appointment with your child's class teacher at a mutually convenient time so that you will be free from interruption. We will also contact you if we have any concerns about your child.

Each week teachers send home a curriculum overview in their newsletters which gives details of the range of skills their children will be learning.





Jewellery & personal property



Jewellery is not permitted, except for children with pierced ears, who may wear studs on those days when they do not have swimming or PE. Earrings must be removed for PE lessons. If a child's ears have very recently been pierced they may wear their studs provided that they are covered with tape by parents/carers, before they come to the Academy. Once the lesson is over they may remove the tape.

A normal watch may be worn once a child is able to use it correctly. This must be removed for PE lessons. Children with long hair should tie it up. This is essential for PE lessons.

Items of personal property should not be brought into the Academy unless there is a special reason and authorisation has been given by the class teacher. If older children require mobile phones for safety reasons when making their own way home, they should be handed into the main office on arrival. The Academy accepts no liability for the loss of personal possessions. All belongings, including all items of Academy uniform should be clearly labelled.

Uniform

Children are expected to wear full Academy uniform every day.

The uniform consists of:

- White polo shirt (with/without Academy logo)
- Navy blue sweatshirt (with/without Academy logo)
- Black shorts, trousers or skirts
- Black or white socks
- Smart black shoes
- Blue gingham dresses can be worn in the summer
- White t-shirt for PE (with/without Academy logo)
- Navy PE shorts
- Black PE pumps
- PE Kit bag
- School book bag (with Academy logo)

Sweatshirts, polo shirts, shorts and bags with the Academy logo can be purchased from a local supplier and details can be obtained from the school office.

Only plain black trainers, without logos or branding, may be worn in the Academy.



Healthy meals and snacks

The Academy operates a healthy eating policy.

- At lunchtime we encourage children to have an Academy meal. These are cooked on site and are nutritionally balanced and always offer a choice. Menus are available in the main office.
- Alternatively, children may bring a packed lunch. Please note that children are not allowed to bring crisps, sweets or chocolate or fizzy drinks into the Academy at any time in line with the healthy eating policy.
- Children can bring plain water to drink during the day in labelled bottles. These should be taken home and refilled each day.



Charging

We charge towards the cost of coaches and entrance fees for trips out of the Academy. Parents/carers cannot be required to pay for activities that take place during the Academy day but trips may not be able to take place without sufficient voluntary contributions.

We may ask for contributions for:

- Some extra-curricular clubs (to cover the cost of materials and equipment)
- Trips
- Residential visits
- Visits to the Academy by theatre companies, performers or special visitors



The curriculum at Oasis Academy Harpur Mount

At Oasis Academy Harpur Mount, we believe that our children learn best:

- If we give them a wide experience of different subjects and activities
- If we focus on teaching them skills and how to do things
- If they are actively involved, interested and enjoy their learning



Our curriculum Foundation Stage

We plan activities to help your child's learning journey through the Early Years Foundation Stage, towards achieving all their early learning goals. We have a bright and stimulating learning environment, where your child can learn through their play, both indoors and outdoors.

We focus on the 3 prime areas of the Early Years Foundation Stage, which support your child's Personal, Social and Emotional Development, Communication and Language and Physical Development to give your child the best start in their education. Having a high focus on the 3 prime areas enables the children to develop the skills needed to be successful in the specific areas of English and Maths.

The Nursery and Reception children use our outdoor area for their learning. When they use the outdoor provision the children continue their learning experiences in different kinds of ways.

As well as using lots of energy to move around, exercise and develop their physical skills, the children practice other skills that are necessary for them to grow and develop.

They learn to make friends and share and co-operate with their peers, learn to take risks and experiment using their own ideas. They enjoy role-play and creativity, reading, writing and practicing their mathematical skills. In the outdoor environment, they have the opportunity to find out about nature using all their senses to absorb the world around them.

Collective worship

There are whole Academy assemblies on Monday and Friday. These are broadly Christian in tone but explore other cultures and beliefs as well as providing the chance to discuss moral issues. Parents / Carers and friends of the Academy may be invited to attend these from time to time.

Parents / Carers have the right to withdraw their child from acts of collective worship. If you wish to do this, you should discuss this with your child's class teacher.

Our curriculum

From Year 1

Our curriculum includes core areas of learning and experience, which are essential to a child's development and are defined within the National Curriculum. The learning environment is also carefully planned to support learning and teaching so that children can become independent and motivated learners.

We offer a rich, broad balanced and personalised curriculum enriched with British Values, global learning, cultural experiences enriched with social, moral, spiritual and cultural elements all centred around our Oasis ethos.

Oasis Academy Harpur Mount is committed to ensuring the welfare and safety of all our children in school and we embed this throughout the curriculum. We believe that pupils have a right to learn in a supportive, caring and safe environment.

Sex education forms part of the health and science curriculum. Children learn about relationships within the moral, family-orientated framework. They learn about themselves and other living organisms as part of the life and living processes element of the science curriculum.

Parents/carers are informed of this and given the opportunity to discuss the resources and content of these lessons. Parents/carers have a right to withdraw their child from sex education and may discuss this with the child's class teacher.





The core areas of the curriculum are:



English Language and Literacy –
speaking, listening, reading and writing



Mathematics –
learners develop their numeracy, problem solving and reasoning skills through a range of practical activities and challenges.



Science –
learners have opportunities to explore and learn about their world. They learn to hypothesise, test their predictions and draw conclusions.



Information Technology –
learners are equipped with the necessary skills and confidence to successfully function in the changing world of technology.



Religious Education –
we believe that all learners should develop mutual respect and understanding of many different beliefs and cultures. You will have the right to withdraw your child from RE and Collective Worship by written request.

Your child will also study the following Foundation subjects:

- History
- Music
- Geography
- Physical Education
- Art
- Design Technology
- Personal, Social & Health Education and Citizenship
- Modern Foreign Languages (KS2)

Whenever possible, we try to make links across subjects, so that learning in one area enhances learning in another subject. Some subjects such as Maths and English are taught daily. Others are planned for over the year through whole Academy themes and topics. These themes have been chosen because they exemplify some of the values we believe are important for children's future well-being and success. Each year group investigates a different aspect of the theme.

In all subjects we encourage children to ask and try to answer their own questions and explain their thinking.

We aim to include trips and real experiences in our curriculum whenever we can.

Different teaching methods are used at different times in the Academy. During a week, a mixture of whole class, group and individual teaching and learning will be used, depending on which is most appropriate.



Opportunities and Partnerships

Student Council:

This is a chance for the Academy to hear the voice of the children. The group is made up of two elected representatives from Years 2-6. They meet with staff regularly to make suggestions about the day-to-day running of the Academy. They decide on and help to organise fundraising projects such as Comic Relief.

Junior Cadet Scheme:

Global Policing will be part of Academy life with students being offered to be part of the cadet scheme. They look at the community as a whole and think of ways they can make changes for the better. They will be mentored by ex-police officers.

After School Clubs:

We offer a wide range of extra-curricular activities including sports clubs (netball, football,) homework club, and art club, dancing and singing, gardening.

Educational Trips Outside the Academy:

Our excellent location means we make full use of all that the surrounding community has to offer. We take regular trips to Heaton Park to learn about nature and the environment, we make use of excellent public transport links into the Manchester City Centre.

Partnerships with Secondary Academies:

We work closely with other Oasis Academies in our region, such as Oasis Academy Oldham and Oasis Academy MediaCityUK. Our Academy as a whole also benefits from the use of other local Oasis Academies' cutting edge facilities.

Oasis Global Partnerships:

Oasis works in 11 countries across the world, delivering a range of services in each. Each Oasis Academy is partnered with one of the 10 other countries we work in and we regularly share learning and experiences, and carry out awareness- and fundraising. Our Academy is partnered with Oasis Mozambique.





Hub and Community

The Academy enjoys close links with the local community and works closely with several local agencies. The Academy aims to help children understand their own identity and to appreciate and value the diversity of people's different backgrounds and circumstances.

Our Academy sits within a wider Oasis community 'Hub.' The vision of the Academy is to create both an outstanding school and community hub. The aim is for our community to be able to access a range of services, adult learning programmes, healthy living advice and activities, sports facilities and out of hours youth activities.

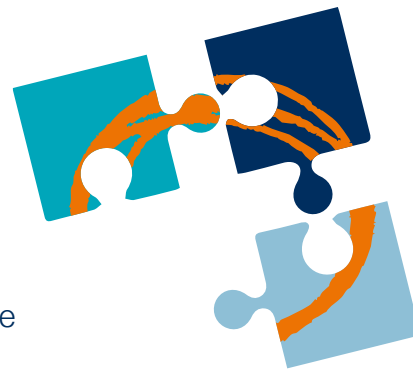
This is an Academy that works with, in and for our community, and the community is becoming increasingly proud of us. Oasis believes it has a duty to respect the environment through a commitment of sustainability and bio-diversity.

The aim of the Hub is to:

- engage parents and community in the life of the school.
- To raise the profile and reputation of the Academy within the local area through renewed energy, excitement and opportunity
- To make a significant impact on the community.
- To create a variety of specialist learning opportunities for learners, different skills that will contribute to their future economic wellbeing.
- To enable young people to contribute to not only their school but their wider community in partnership with other organisations looking to make a difference.
- Focus is to empower and inspire local Families and raise aspirations. We will offer courses, workshops and learning opportunities to adults.

The Hub will also offer training facilities for other agencies to use.

Our Commitment to Equality



Equality and inclusion are at the heart of Oasis. We have a passion to include everyone and a deep desire to treat everyone equally. We accept others for who they are and respect differences.

Our aim is to provide an excellent education for all our students. Our way of doing this is to work hard to improve students' attainment and the standards of teaching and learning continually. At the same time, we also aim to meet the needs of the whole person and the whole community because we understand that the whole of life is education and that everyone who is part of a student's life affects that student's understanding of life and, therefore, his or her education. In this sense, every person matters.

The Equality Act 2010 gathers together various different pieces of equality legislation which have been developed over a number of recent years. It sets out some key equality provisions for the delivery of education and a requirement for public bodies to eliminate discrimination, advance equality of opportunity and foster good relationships between different groups. Against the background of the UK's increasingly diverse communities, Oasis recognises that this Act plays a major role in recognising the UK's historic commitment to tolerance. The Equality Act 2010 is, therefore, an important and significant piece of legislation for Oasis because its key provisions underpin the aim of Oasis itself: an equal and inclusive society in which difference is understood and respected. This Academy is committed to meeting its obligations within the law and being a good expression of Oasis' own commitment to equality.

Special educational needs

We aim to meet the needs of all individuals within our Academy. Occasionally some children experience greater difficulties in aspects of their learning than others. These children are offered extra support within their class.

They may be identified as having Special Educational Needs. In line with the Special Educational Needs (SEN) Code of Practice these children are placed on the Academy's SEN register. Their progress is closely monitored and reviewed at regular intervals. Individual Education Plans may be written for children with Special Educational Needs and are reviewed with parents/carers at Parents/carers' Evenings or by arrangement. If necessary, the Academy is able to access many support agencies in order to help meet their needs.

Gifted and talented

The Academy keeps a register of children who have specific talents or gifts in order to better meet their learning needs.

Behaviour

We expect high standards of behaviour at all times. We encourage children to develop self-discipline and to care about themselves and others, respecting their rights and feelings. There are four core rules throughout the Academy:

1. Always do our best
2. Always be kind and thoughtful with our words and actions
3. Look after our school
4. Listen to everyone

Children who follow these rules consistently are rewarded with children's choice at the end of each week for 30 minutes on a Friday afternoon.

For children who do not adhere to the rules the following sanctions apply:

Preliminary warnings:

- Step 1 **move to amber on class behaviour traffic light**
- Step 2 **an improvement means a move back to green**
Continuation of behaviours after warning is move to red (miss children's choice)
- Step 3 **removal to another class and a letter home**

A child is moved straight to red for aggressive behaviour, wilful damage or theft.

An exclusion can also be issued in exceptional circumstances where extreme behaviour gives the Principal no alternative or where a serious incident has to be investigated. Students start each day with a clean sheet.

Complaints Procedure

If a parent/carer is unhappy about something or has any concerns about anything to do with the Academy, they should communicate this as soon as possible.



In the first instance parents should discuss any concerns with the class teacher. Most concerns or issues can be addressed informally at this stage. Teachers are available for informal discussions at the end of the Academy day or by appointment.

If any issue remains unresolved or if it is difficult to discuss a matter with the class teacher, parents should arrange an appointment with the Academy Leadership Team.

The Academy Leadership Team will investigate any concerns raised and inform the parent of their findings. In most cases, the issue will have been resolved by this stage. However, if parents are still unhappy, they should make a formal complaint in writing addressed to the Principal.

If all the above stages fail to resolve the issue, parents should make a formal complaint in writing addressed to the chair of the Academy council. The Academy council is responsible for acknowledging, investigating and responding to such formal complaints about the Academy. Further details are available in the Academy's Complaint Procedure available by request from the main office.

Availability of Documentation

Parents/carers should note that the Academy has a great deal of documentation. Essential policies and information are available by request from the main office or through the Academy's website:

www.oasisacademyharpurmount.org



Associate Principal:
Lesley Crew

Executive Principal:
Mick Beresford

Telephone: 0161 205 4993
www.oasisacdemyharpurmount.org

info@oasisharpurmount.org



If you wish to know more about Oasis Community Learning - part of the Oasis group of charities please contact:

The Oasis Centre
Millbank Tower
21-24 Millbank Tower
Westminster
London
SE1 7QP

www.oasisuk.org/education
Registered number: 5398529.



Oasis Academy Harpur Mount

Alfred Street
Harpurhey
Manchester
M9 5XR

t. 0161 205 4993
info@oasisacadeharpurmount.org

www.oasisacademyharpurmount.org